



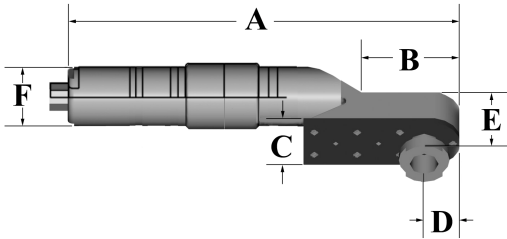
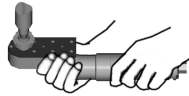
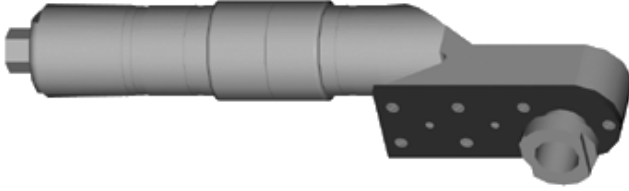
ACCESSORIES: ELECTRODE DRESSERS  
PNEUMATIC POWER HANDLE, CUTTERS, & ACCDESSORIES

**FEATURES AND SPECIFICATIONS**

**Features and Benefits**

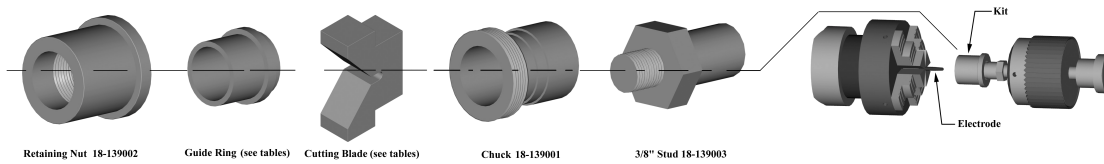
- Light weight and rugged construction, this CMW Pneumatic Power Handle requires a clearance of only 1-1/2" with a standard ring and 2" with an extended ring. In most situations this allows dressing of electrodes without removal from the welder. Operating at a cutting speed of 1200 RPM, it enables the operator to dress electrodes quickly and accurately. Cutters and guide rings are easily replaced.

- The CMW kit is appropriate for use with either Pneumatic Power Tool (18-1310) or any rotary device with 3/8" keyed chuck.



Part No.	Dimensions (in inches)		
	A	B	C
18-1310	10-1/2	2-1/2	1-1/2
	D	E	F
	1	1-1/2	1-3/4

**ORDERING INFORMATION AND DIMENSIONS**



TO DRESS									
RWMA 4 (.482 Dia.)	NOSE STYLE	DOME	POINTED	FLAT	2" RADIUS	3" RADIUS	4" RADIUS	10" RADIUS	TRUNCATED
	CMW Electrode No.	x11x...	x21x...	x31x...	x51x...	x81x...	x91x...	x61x...	x71x...
	KIT TO ORDER**	18-1390411	18-1390420	18-1390410	18-1390413	18-1390414	18-1390415	18-1390416	18-1390412
	Replacement Blade	18-139411	18-139420	18-139410	18-139413	18-139414	18-139415	18-139416	18-139412
	Replacement Guide	18-139401	18-139402	18-139401	18-139401	18-139401	18-139401	18-139401	18-139401
RWMA 5 (.625 Dia.)	NOSE STYLE	DOME	POINTED	FLAT	2" RADIUS	3" RADIUS	4" RADIUS	10" RADIUS	TRUNCATED
	CMW Electrode No.	x12x...	x22x...	x32x...	x52x...	x82x...	x92x...	x62x...	x72x...
	KIT TO ORDER**	18-1390511	18-1390520	18-1390510	18-1390513	18-1390514	18-1390515	18-1390516	18-1390512
	Replacement Blade	18-139511	18-139520	18-139510	18-139513	18-139514	18-139515	18-139516	18-139512
	Replacement Guide	18-139501	18-139502	18-139501	18-139501	18-139501	18-139501	18-139501	18-139501

\*\*Note: This kit includes Stud (for 3/8" keyed chuck), Chuck, 1 Guide Ring, 1 appropriate Blade, and Retaining Nut.