

STRAIGHT ELECTRODES, FLAT NOSE  
ELKONITE® AND ELKON® FACED



**FEATURES AND SPECIFICATIONS**

**Features and Benefits**

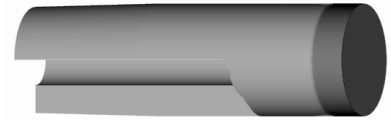
- ELKONITE® or ELKON® facings are used for projection, crosswire, resistance brazing, high pressure and heat applications
- Long lasting, heavy duty electrode
- Can be used in many job shop applications
- Works with all industry standard holders
- Can be redressed many times

**Use With**

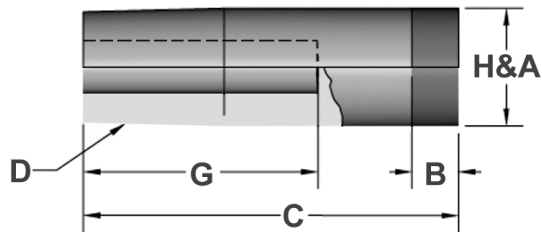
- 4RW or 5RW CMW holders

**Mechanical**

- Electrical conductivity up to 50% IACS
- Rockwell hardness up to 100 HRC



ELECTRODES  
STRAIGHT



**ORDERING INFORMATION AND DIMENSIONS**

RWMA	PART NO.			MAJOR DIA.	ELKONITE® or ELKON® LENGTH	OVERALL LENGTH	HOLE DEPTH	FACE DIA.
	MATERIAL							
	ELKONITE® 10W3	ELKON® 100M	ELKON® 100W					
D				A	B	C	G	H
4	6310050	831050	931050	.482	3/16	2	1-1/2	.482
5	632030	-	-	.625	1/4	1-1/2	1	5/8
	632050	832050	932050			2	1-1/2	
	632070	-	-			2-1/2	2	
	16-1353	-	-			2-1/2	5/8	
7	633050	833050	933050	.875	1/4	2	1-1/2	7/8